



AUGUST 2000

**1305.5**

# MONTHLY SUMMARY OF STATISTICS

Final  
Issue

WESTERN  
AUSTRALIA

EMBARGO: 11:30AM (CANBERRA TIME) THURS 31 AUG 2000

## CONTENTS

	<i>page</i>
Notes .....	2

### TABLES

<b>1</b> Population .....	4
<b>2</b> Tourism .....	8
<b>3</b> Employment .....	14
<b>4</b> Retail .....	19
<b>5</b> Construction .....	20
<b>6</b> Production .....	23
<b>7</b> Overseas Trade .....	27
<b>8</b> Transport .....	29
<b>9</b> Finance .....	30
<b>10</b> Statistical Summary .....	31

- For more information about these and related statistics, contact the National Information Service on 1300 135 070.

## NOTES

### FORTHCOMING ISSUES

The *Monthly Summary of Statistics* is to be replaced by a new quarterly publication, *Western Australian Statistical Indicators (1367.5)*, with the first edition scheduled for release on 12 October 2000. In addition to the data you have been used to receiving, each issue of this new publication has been enhanced to include an analysis of recent movements in key State economic and labour market data as well as a feature article(s) on various aspects of the Western Australian economy. The analysis in *Western Australian Statistical Indicators* will provide insights into Western Australia's changing economy and be a ready reference for more detailed information about significant components of the economy, including such aspects as Western Australia's international trade, small business, information technology, and labour market, planned to be provided as a series of feature articles.



### SYMBOLS AND OTHER USAGES

n.a.	not available
n.e.i.	not elsewhere included
n.p.	not available for publication but included in totals where applicable
n.y.a.	not yet available
—	nil or rounded to zero
..	not applicable
*	subject to sampling variability too high for most practical purposes
p	preliminary - figure or series subject to revision
r	figure or series revised since previous issue
—	break in continuity of series (where drawn between two consecutive figures or columns)



### INQUIRIES

For information about other ABS statistics and services, please refer to the back of this publication.

For further information about these statistics, contact the National Inquiry Service on 1300 135 070.

Colin Nagle  
Regional Director, Western Australia

# CONTENTS

Page

## TABLES

### Population

1.1	Estimated Resident Population	4
1.2	Components of Population Change	5
1.3	Registration of Births, Deaths, Marriages and Divorces	6
1.4	Rates of Births, Deaths, Marriages and Divorces	7

### Tourism

2.1	Overseas Arrivals and Departures	8
2.2	Short-term Overseas Visitor Arrivals from Selected Countries	9
2.3	Short-term Overseas Visitor Arrivals by Air for Holiday	10
2.4	Short-term Departures of Residents to Selected Destinations	11
2.5	Short-term Departures of Residents by Air to Selected Destinations: Holiday	12
2.6	Tourist Accommodation	13

### Employment

3.1	Labour Force Status: Seasonally Adjusted	14
3.2	Labour Force Status: Trend	15
3.3	Average Weekly Earnings of Employees: Trend	16
3.4	Industrial Disputes Causing Stoppage of Work	17
3.5	Wage and Salary Earners: Industry-Sector	18

### Retail

4.1	Monthly Retail Turnover	19
-----	-------------------------	----

### Construction

5.1	Dwelling Units Approved	20
5.2	Value of Non-Residential Building Approved	21
5.3	Selected Housing Price Indexes: Perth	21
5.4	Price Index of Materials Used in Building Other Than House Building: Perth	22

### Production

6.1	Livestock Slaughtered	23
6.2	Meat Produced	23
6.3	Wool Receivals and Live Sheep Exports	24
6.4	Energy Production	25
6.5	Mineral Exploration: Expenditure by Type of Mineral Sought	26
6.6	Mineral Production	26

### Overseas Trade

7.1	Imports by Selected Divisions	27
7.2	Exports by Selected Divisions	28

### Transport

8.1	New Motor Vehicle Registrations	29
8.2	Vehicle Registration Statistics	29

### Finance

9.1	Private New Capital Expenditure by Selected Industry Groups	30
-----	---	----

### Statistical Summary

10.1	Statistical Summary	31
------	---------------------	----

# 1.1

## ESTIMATED RESIDENT POPULATION

	<i>Males</i>	<i>Females</i>	<i>Persons</i>
	no.	no.	no.
<b>Financial Years</b>			
1996-97	904 382	893 488	1 797 870
1997-98	920 549	908 596	1 829 145
1998-99	937 021	923 995	1 861 016
<b>Calendar Years</b>			
1997	911 349	900 247	1 811 596
1998	928 961	916 588	1 845 549
1999	943 379	930 463	1 873 842
<b>Quarters</b>			
Sep 98	925 267	912 922	1 838 189
Dec 98	928 961	916 588	1 845 549
Mar 99	933 768	920 864	1 854 632
Jun 99	937 021	923 995	1 861 016
Sep 99	940 483	927 669	1 868 182
Dec 99	943 379	930 463	1 873 842

Source: ABS Catalogue No. 3101.0 (Table 4).

### ANALYSIS OF TABLE 1.1

The estimated resident population of Western Australia at 31 December 1999 was 1,873,842. The population increased by 5,660 or 0.3% on the September 1999 quarter and increased by 28,293 or 1.5% in the year ended 31 December 1999.

# 1.2 COMPONENTS OF POPULATION CHANGE

	Natural increase	Net estimated overseas migration(a)	Net estimated interstate migration	Total increase(b)
	no.	no.	no.	no.
<b>Financial Years</b>				
1996-97	14 158	12 267	6 189	32 614
1997-98	13 715	12 834	4 726	31 275
1998-99	14 220	15 876	1 775	31 871
<b>Calendar Years</b>				
1997	13 675	10 761	5 292	29 728
1998	14 215	15 864	3 874	33 953
1999	14 049	14 234	10	28 293
<b>Quarters</b>				
Sep 98	3 348	4 520	1 176	9 044
Dec 98	3 375	3 853	132	7 360
Mar 99	3 442	5 210	431	9 083
Jun 99	4 055	2 293	36	6 384
Sep 99	3 355	3 918	-107	7 166
Dec 99	3 197	2 813	-350	5 660

(a) Includes an adjustment for 'category jumping'.

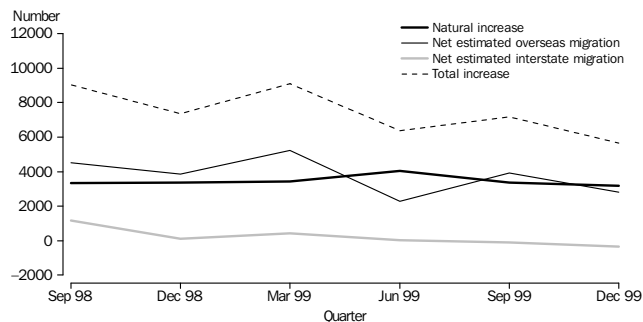
(b) Differences between total growth and the sum of natural increase and net migration arise from retrospective adjustments (which are made after every Census) to compensate for any intercensal discrepancy.

Source: ABS Catalogue No. 3101.0 (Table 2).

## ANALYSIS OF TABLE 1.2

During the December quarter of 1999, the population of Western Australia increased by 5,660 compared with a population increase of 7,166 in the previous quarter. Overseas migration was down 1,105 (28.2%), while natural increase and interstate migration fell 158 (4.7%) and 243 (227.1%) respectively on the September 1999 quarter.

## COMPONENTS OF POPULATION CHANGE, WESTERN AUSTRALIA



Source: ABS Catalogue No. 3101.0.

# 1.3

## REGISTRATION OF BIRTHS, DEATHS, MARRIAGES AND DIVORCES

	Live Births (a)	Infant Deaths (a)	Total Deaths (a)	Marriages	Divorces
<b>Financial Years</b>					
1996-97	24 744	133	10 586	10 372	4 931
1997-98	24 705	138	10 990	10 457	5 112
1998-99	25 010	103	10 790	10 593	5 328
<b>Calendar years</b>					
1997	24 514	136	10 839	10 456	5 046
1998	24 965	117	10 750	10 705	5 268
1999	24 906	114	10 857	10 294	5 219
<b>Quarters</b>					
Sep 98	6 328	34	2 980	1 550	1 463
Dec 98	6 132	26	2 757	3 688	1 373
Mar 99	5 957	24	2 515	2 753	1 207
Jun 99	6 593	19	2 538	2 602	1 285
Sep 99	6 376	49	3 021	1 408	1 352
Dec 99	5 980	22	2 783	3 531	1 375

(a) NOTE: With the exception of preliminary data estimates, births and deaths are included by State or Territory of usual residence and year of occurrence. For preliminary estimates births and deaths are included by State or Territory of usual residence and year of registration.

Source: ABS Catalogue No. 3101.0 (Tables 11, 12, 13, 14 & 15).

### ANALYSIS OF TABLE 1.3

The number of live births in the December quarter 1999 decreased by 396 or 6.2% on the previous quarter and was 152 or 2.5% less than in the same quarter of 1998.

There were 22 infant deaths in the December quarter of 1999, 27 or 55.1% less than in the September quarter of 1999, and 4 or 15.4% less than in the December quarter of 1998.

Total deaths fell by 238 or 7.9% from the September quarter of 1999, and were 26 or 0.9% more than in the December quarter of 1998.

The number of marriages in the December quarter of 1999 increased by 2123 or 150.8% from the previous quarter, but was 157 or 4.3% less than in the same quarter of 1998.

The number of divorces increased from 1,352 in the September 1999 quarter to 1,375 in the December 1999 quarter, an increase of 1.7%. This was 2 more than in the December 1998 quarter.

# 1.4

## RATES OF BIRTHS, DEATHS, MARRIAGES AND DIVORCES

	Live Births(a)	Infant Mortality(b)	Total Deaths(a)	Marriages(a)	Divorces(a)
<b>Financial Years</b>					
1996-97	13.8	5.4	5.9	5.8	2.7
1997-98	13.5	5.6	6.0	5.7	2.8
1998-99	13.4	4.1	5.8	5.7	2.9
<b>Calendar years</b>					
1997	13.5	5.5	6.0	5.8	2.8
1998	13.5	4.7	5.8	5.8	2.9
1999	13.3	4.6	5.8	5.5	2.8
<b>Quarters</b>					
Sep 98	13.8	5.4	6.5	3.4	3.2
Dec 98	13.3	4.2	6.0	8.0	3.0
Mar 99	12.9	4.0	5.4	6.0	2.6
Jun 99	14.2	2.9	5.5	5.6	2.8
Sep 99	13.7	7.7	6.5	3.0	2.9
Dec 99	12.8	3.7	5.9	7.5	2.9

(a) For financial and calendar years the rate is per 1,000 estimated resident population at 31 December and 30 June, respectively. For quarters, the rate is per 1,000 of the average of the previous and current quarterly populations.

(b) Infant deaths per 1,000 live births.

Source: ABS Catalogue No. 3101.0.

### ANALYSIS OF TABLE 1.4

In the December quarter of 1999, the crude birth rate, crude infant mortality rate, and crude death rate decreased over the September quarter of 1999. The crude divorce rate stayed the same, while the crude marriage rate increased over the preceding quarter.

In the December quarter of 1999, the crude birth rate, crude infant mortality rate, crude death rate, crude marriage rate, and crude divorce rate were all lower than in the same quarter of the previous year.

*For more information regarding tables on Vital statistics, please contact Sue Lee on (08) 9360 5935.*

# 2.1 OVERSEAS ARRIVALS AND DEPARTURES

	SHORT-TERM ARRIVALS.....			LONG-TERM ARRIVALS.....		Total Arrivals
	Permanent Arrivals	West Australian Residents	Overseas Visitors	West Australian Residents	Overseas Visitors	
<b>Financial Years</b>						
1996-97	10 520	334 750	397 610	8 880	11 650	763 410
1997-98	9 750	379 660	402 400	9 340	12 880	814 000
1998-99	10 670	397 820	410 840	7 290	13 390	840 010
<b>Months</b>						
Mar 99	880	26 070	38 100	580	660	66 290
Apr 99	910	28 620	32 390	450	900	63 260
May 99	910	28 000	27 520	450	640	57 540
Jun 99	790	27 930	28 150	540	710	58 120
Jul 99	1 020	41 420	33 100	610	2 180	78 360
Aug 99	1 050	37 860	32 990	590	710	73 220
Sep 99	1 040	38 480	36 070	670	770	77 020
Oct 99	920	42 590	40 540	710	920	85 680
Nov 99	910	27 480	45 770	1 030	620	75 800
Dec 99	870	20 660	44 350	1 200	610	67 690
Jan 00	1 090	45 610	36 980	820	2 110	86 610
Feb 00	800	26 400	41 690	590	2 890	72 360
Mar 00	1 060	27 070	38 910	560	740	68 320
Apr 00	960	30 530	35 310	690	900	68 390
May 00	850	31 790	27 360	450	600	61 070

	SHORT-TERM DEPARTURES.....			LONG-TERM DEPARTURES.....		Total Departures
	Permanent Departures	West Australian Residents	Overseas Visitors	West Australian Residents	Overseas Visitors	
<b>Financial Years</b>						
1996-97	3 610	339 990	389 530	8 080	6 180	747 390
1997-98	4 000	387 490	402 850	8 500	7 450	810 300
1998-99	3 970	399 610	413 400	8 880	5 020	830 880
<b>Months</b>						
Mar 99	410	32 730	37 620	780	340	71 870
Apr 99	400	25 230	36 300	770	340	63 020
May 99	320	31 920	30 650	750	370	64 000
Jun 99	340	33 610	34 010	590	530	69 080
Jul 99	370	40 280	28 550	700	570	70 480
Aug 99	390	36 300	36 500	780	470	74 430
Sep 99	310	41 700	30 080	620	440	73 150
Oct 99	310	31 180	32 280	680	410	64 850
Nov 99	350	27 780	40 900	720	590	70 350
Dec 99	390	37 410	41 790	690	1 190	81 470
Jan 00	570	29 330	45 690	1 220	520	77 330
Feb 00	340	24 230	36 920	720	430	62 630
Mar 00	390	35 590	41 900	780	550	79 210
Apr 00	400	34 890	40 260	810	480	76 840
May 00	370	34 540	37 390	810	400	73 520

Source: ABS Unpublished Overseas Arrivals and Departures. Since figures have been rounded to the nearest ten, discrepancies may occur between sums of component items and totals.



ANALYSIS OF TABLE 2.1

The total of 61,070 overseas arrivals in May 2000 was 7,320 lower than in the previous month and 3,540 higher than in May 1999.

In May 2000, 31,790 Western Australian residents returned from short-term overseas visits, an increase of 4.1% on April 2000. In May 2000, 27,360 overseas visitors arrived in Western Australia for short-term visits. This was a decrease of 7,950 on April 2000.

There were 450 residents returning to Western Australia in May 2000, after a long-term stay overseas. Arrivals of long-term overseas visitors numbered 600 in May 2000. This was a decrease of 300 over the previous month.

The 34,540 short-term departures of Western Australian residents in May 2000 represented a decrease of 1.0% on April 2000, and an increase of 8.2% on May 1999.

Total departures of residents and visitors numbered 73,520 in May 2000, a decrease of 4.3% on the previous month and an increase of 14.9% on May 1999.

## 2.2 SHORT-TERM OVERSEAS VISITOR ARRIVALS FROM SELECTED COUNTRIES (a)

	COUNTRY OF ORIGIN.....					Total(b)
	New Zealand	UK & Ireland	Indonesia	Japan	Singapore	
<b>Financial Years</b>						
1996-97	26 420	69 460	51 600	33 930	63 950	397 610
1997-98	26 410	81 390	34 380	32 620	73 140	402 400
1998-99	27 490	91 820	28 600	34 530	64 890	410 840
<b>Months</b>						
Mar 99	2 610	10 010	1 970	3 580	5 710	38 100
Apr 99	3 060	7 150	2 050	2 520	4 760	32 380
May 99	1 480	4 670	3 130	1 670	5 370	27 520
Jun 99	2 050	4 770	1 390	1 130	9 380	28 150
Jul 99	2 040	5 510	2 490	3 650	4 160	33 100
Aug 99	2 300	4 530	1 970	4 690	5 670	33 000
Sep 99	2 730	7 750	1 440	3 230	6 840	36 070
Oct 99	2 980	11 190	1 620	3 920	4 750	40 540
Nov 99	2 390	14 200	1 050	2 790	9 440	45 770
Dec 99	2 260	8 690	1 920	3 210	7 550	44 350
Jan 00	2 390	9 280	2 400	4 210	3 030	36 980
Feb 00	1 440	9 760	2 390	4 660	5 710	41 690
Mar 00	2 040	9 510	1 840	4 300	6 620	38 910
Apr 00	3 150	9 040	1 370	2 190	4 470	35 310
May 00	2 370	3 720	1 240	2 180	6 330	27 360

(a) Comprises travellers whose intended stay is less than twelve months.

(b) Total includes countries not listed in this table.

Source: ABS Unpublished Overseas Arrivals and Departures .

ANALYSIS OF TABLE 2.2

Short-term visitor arrivals from Singapore increased by 1,860 on April 2000, and decreased by 960 on May 2000. These arrivals represented 23.1% of all short-term visitor arrivals. Short-term visitor arrivals from the UK and Ireland decreased by 5,320 on April 2000, and decreased by 950 on May 1999. These arrivals represented 13.6% of all short-term visitor arrivals.

## 2.3

### SHORT-TERM OVERSEAS VISITOR ARRIVALS BY AIR, FOR HOLIDAY (a)

	COUNTRY OF ORIGIN.....								Total(b)
	New Zealand	UK & Ireland	Indonesia	Japan	Malaysia	Singapore	Thailand	United States	
<b>Financial Years</b>									
1996-97	6 670	24 050	33 870	27 870	23 600	45 350	10 230	2 590	215 820
1997-98	7 830	27 660	19 580	26 650	23 920	50 470	5 880	3 520	205 550
1998-99	7 710	34 590	12 770	24 560	17 220	41 710	4 720	3 690	192 550
<b>Months</b>									
Mar 99	560	4 240	1 030	2 990	1 360	4 030	370	460	19 510
Apr 99	940	2 760	750	1 930	1 910	3 040	1 350	250	16 210
May 99	440	1 590	1 480	1 150	2 960	3 640	380	150	14 070
Jun 99	680	1 750	550	880	1 250	6 720	230	300	14 470
Jul 99	490	2 070	790	2 900	960	1 660	310	550	14 890
Aug 99	910	1 790	750	3 070	2 000	4 250	410	370	17 710
Sep 99	930	3 190	710	2 440	2 220	4 900	290	260	19 130
Oct 99	1 030	5 150	640	3 340	1 860	3 420	640	270	22 190
Nov 99	540	4 980	350	1 810	2 200	7 380	270	760	23 430
Dec 99	710	3 550	1 290	2 670	1 930	5 780	560	500	25 380
Jan 00	630	3 930	1 000	3 490	1 050	900	300	350	16 670
Feb 00	320	4 770	740	3 800	2 550	3 090	290	530	21 220
Mar 00	570	3 280	1 040	3 650	2 550	4 960	810	200	20 740
Apr 00	780	3 100	440	1 960	2 210	3 380	1 080	340	17 280
May 00	390	1 620	600	1 560	2 960	4 250	540	230	14 580

(a) Comprises travellers whose intended stay is less than twelve months.

(b) Total includes countries not listed in this table.

Source: ABS Unpublished Overseas Arrivals and Departures.

#### ANALYSIS OF TABLE 2.3

A total of 14,580 short-term overseas visitors arrived by air for holidays in Western Australia in May 2000, a decrease of 2,700 on April 2000, and an increase of 510 on May 1999.

In May 2000, 1,560 short-term visitors arrived by air from Japan for holidays. This was a decrease of 400 on April 2000, and represented 10.7% of arrivals into Western Australia by this category of holiday maker.

# 2.4

## SHORT-TERM DEPARTURES OF RESIDENTS TO SELECTED DESTINATIONS (a)

COUNTRY OF DESTINATION.....

	New Zealand	UK & Ireland	Indonesia	Malaysia	Singapore	Total(b)
<b>Financial Years</b>						
1996-97	26 580	50 320	89 030	23 620	26 770	339 990
1997-98	30 360	54 190	103 090	25 820	34 520	387 490
1998-99	29 100	51 870	105 920	28 190	41 040	399 610
<b>Months</b>						
Mar 99	3 250	3 920	6 660	2 590	4 970	32 730
Apr 99	2 420	3 060	5 650	2 510	2 480	25 220
May 99	1 000	6 200	6 270	2 110	3 100	31 920
Jun 99	1 450	5 880	6 650	1 820	4 330	33 620
Jul 99	2 440	5 460	10 180	3 650	4 480	40 290
Aug 99	2 620	5 690	8 760	2 870	3 300	36 310
Sep 99	2 590	6 120	7 940	3 430	5 290	41 700
Oct 99	1 490	3 520	4 360	4 300	2 500	31 170
Nov 99	3 360	4 090	3 300	2 330	3 540	27 790
Dec 99	5 670	5 980	5 260	3 240	3 610	37 410
Jan 00	2 940	2 540	7 330	2 670	3 140	29 330
Feb 00	3 720	1 760	4 310	2 070	3 470	24 230
Mar 00	2 930	3 910	7 140	3 310	4 920	35 590
Apr 00	2 050	4 310	6 650	3 130	3 900	34 890
May 00	1 950	6 530	4 530	1 970	3 920	34 540

(a) Comprises travellers whose intended stay is less than twelve months.

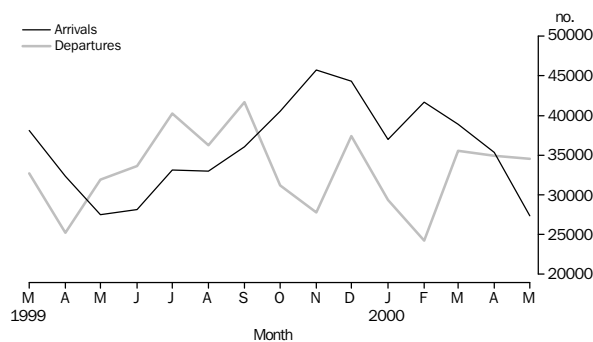
(b) Total includes countries not listed in this table.

Source: ABS Unpublished Overseas Arrivals and Departures.

### ANALYSIS OF TABLE 2.4

In May 2000, 34,540 Western Australian residents departed for short-term periods overseas, a decrease of 350 on April 2000, and an increase of 2,620 on May 1999.

### SHORT-TERM ARRIVALS OF OVERSEAS VISITORS AND DEPARTURES OF RESIDENTS



Source: ABS Unpublished Overseas Arrivals and Departures.

# 2.5

## SHORT-TERM DEPARTURES OF RESIDENTS BY AIR TO SELECTED DESTINATIONS: HOLIDAY

	CONTRY OF DESTINATION.....							Total (b)
	New Zealand	UK & Ireland	Indonesia	Malaysia	Singapore	Thailand	United States	
<b>Financial Years</b>								
1996-97	10 860	23 760	172 640	10 660	13 480	9 790	9 540	186 540
1997-98	12 500	25 910	85 760	12 820	19 560	18 320	11 440	222 180
1998-99	11 430	19 790	88 350	15 580	21 970	22 040	9 220	222 970
<b>Months</b>								
Feb 99	1 060	1 290	5 590	990	1 830	1 340	350	14 600
Mar 99	1 670	1 200	5 520	1 750	3 250	1 700	580	18 350
Apr 99	1 270	1 350	4 800	1 550	1 260	1 590	720	14 270
May 99	390	2 370	5 000	1 140	1 590	1 710	990	16 390
Jun 99	** 50	2 520	5 200	690	2 300	1 330	1 140	16 900
Jul 99	990	2 290	8 500	2 540	2 840	3 220	230	24 160
Aug 99	1 170	2 690	7 400	1 420	2 360	2 190	1 090	21 840
Sep 99	1 420	2 800	6 850	2 200	2 760	3 370	1 220	24 890
Oct 99	700	790	3 440	3 190	1 660	3 940	410	17 210
Nov 99	1 220	1 110	2 260	1 190	1 660	1 360	590	11 890
Dec 99	2 250	2 560	3 880	1 930	2 070	1 370	1 420	19 590
Jan 00	1 280	890	5 930	1 660	1 570	1 460	570	15 660
Feb 00	1 730	370	3 150	920	1 880	1 010	640	11 240
Mar 00	1 310	1 700	5 980	2 120	2 660	1 680	680	18 420
Apr 00	990	2 210	4 780	1 940	2 480	2 160	1 050	18 910
May 00	420	2 940	3 610	1 200	2 240	2 070	1 280	18 340

(a) Comprises travellers whose intended stay is less than twelve months.

(b) Total includes countries not listed in this table.

\*\* Estimates contain Relative Standard Error greater than 50 %. Refer to Explanatory Notes and Standard Error Section of Catalogue no. 3401.0

Source: ABS Unpublished Overseas Arrivals and Departures.

### ANLYSIS OF TABLE 2.5

There were 18,340 short-term departures by air of Western Australian residents for holidays abroad in May 2000. This was 570 less than in April 2000 and 1,950 more than in May 1999.

Indonesia was the most favoured holiday destination for Western Australians, with 19.7% of all short-term departures of residents by air in May 2000.

In May 2000, 2,240 Western Australians departed for holidays in Singapore, a decrease of 240 on April 2000.

*For more information regarding Overseas Arrivals and Departures, please contact David King on (08) 9360 5903.*

# 2.6

## TOURIST ACCOMMODATION

### HOTELS, MOTELS, GUEST HOUSES AND SERVICED APARTMENTS....

	<i>Establishments</i>	<i>Guest rooms</i>	<i>Employment</i>	<i>Room occupancy rates</i>	<i>Guest arrivals</i>	<i>Takings from accommodation</i>
	Number	Number	Persons	%	'000	\$'000
Feb 99				57	187	26 346
Mar 99	304	17 517	9 962	56	198	28 527
April 99				56	225	28 734
May 99				52	200	26 645
Jun 99	308	17 783	9 785	52	200	26 001
Jul 99				55	229	28 588
Aug 99				56	221	28 572
Sep 99	308	17 804	9 906	66	259	33 083
Oct 99				63	258	33 881
Nov 99				61	223	32 183
Dec 99	318	18 595	10 132	49	213	27 950
Jan 00				52	229	29 744
Feb 00				54	204	28 303
Mar 00	323	18 846	10 135	57	233	31 754

Source: ABS Product No. 8635.5.40.001. (The December quarter 1997 issue of *Tourist Accommodation, Western Australia*, ABS Catalogue No. 8635.5, was the final issue of this publication).

Note: The scope of the ABS quarterly Survey of Tourist Accommodation (STA) has changed since the December quarter 1997. Some units will have been reclassified and as a result, data will not be strictly comparable with previously published data for particular accommodation types.

From the March quarter 1998, only those in-scope establishments with 15 or more rooms or units are covered by the survey.

From the March quarter 1998, survey results are aggregated to Tourism Regions as defined by relevant State and Territory Tourist Commissions or equivalent organisations.

From the March quarter 1998, the data quoted above for Establishments, Guest rooms and Employment are quarterly.

As part of the future collection strategy of the STA, significant caravan parks, visitor hostels and remaining holiday flats, units and houses will be surveyed triennially, commencing with a year 2000 reference year.

For more information regarding the changes to the STA and the data available from this collection, please refer to the ABS publication Catalogue No. 8635.0.

*For more information relating to Tourist Accommodation, please contact*

*Pamela Prince on (08) 9360 5207.*

# 3.1

## LABOUR FORCE STATUS (AGED 15 YEARS AND OVER): Seasonally Adjusted

	<i>Employed full-time</i>	<i>Total employed</i>	<i>Total unemployed</i>	<i>Unemployment rate</i>	<i>Participation rate</i>
	'000	'000	'000	%	%
<b>Males</b>					
May 99	441.4	509.1	37.0	6.8	74.9
Jun 99	444.0	508.9	38.4	7.0	74.9
Jul 99	446.2	512.6	36.9	6.7	75.1
Aug 99	448.4	514.9	37.5	6.8	75.4
Sep 99	449.7	516.0	40.6	7.3	75.9
Oct 99	454.2	521.4	41.2	7.3	76.5
Nov 99	456.1	520.8	41.3	7.3	76.3
Dec 99	458.4	523.7	36.1	6.5	75.9
Jan 00	453.8	522.1	42.4	7.5	76.4
Feb 00	461.9	528.4	39.1	6.9	76.7
Mar 00	460.5	525.7	38.2	6.8	76.1
Apr 00	460.1	526.2	36.8	6.5	75.9
May 00	455.5	523.8	34.3	6.1	75.2
Jun 00	455.0	525.0	32.7	5.9	75.1
Jul 00	458.7	527.6	35.5	6.3	75.7
<b>Females</b>					
May 99	201.0	386.4	26.3	6.4	56.6
Jun 99	204.8	391.7	24.1	5.8	56.9
Jul 99	205.3	391.5	25.9	6.2	57.0
Aug 99	205.9	398.8	26.2	6.3	56.7
Sep 99	205.7	393.5	26.9	6.4	57.3
Oct 99	212.0	396.4	25.6	6.1	57.4
Nov 99	218.7	405.6	26.2	6.1	58.6
Dec 99	211.6	402.4	23.9	5.6	57.8
Jan 00	210.7	401.9	24.9	5.8	57.8
Feb 00	213.1	401.5	23.5	5.5	57.4
Mar 00	213.1	401.3	26.7	6.2	57.8
Apr 00	213.0	400.5	32.4	7.5	58.4
May 00	206.9	397.6	27.4	6.4	57.2
Jun 00	204.5	400.8	25.7	6.0	57.4
Jul 00	211.3	396.9	24.7	5.9	56.6
<b>Persons</b>					
May 99	642.4	895.4	63.4	6.6	65.7
Jun 99	648.8	900.6	62.4	6.5	65.9
Jul 99	651.5	904.1	62.7	6.5	66.1
Aug 99	654.3	904.7	63.7	6.6	66.1
Sep 99	655.4	909.5	67.5	6.9	66.6
Oct 99	666.2	917.8	67.1	6.8	67.0
Nov 99	674.8	926.4	67.5	6.8	67.5
Dec 99	670.0	926.1	60.1	6.1	66.8
Jan 00	664.4	924.0	67.3	6.8	67.1
Feb 00	674.9	929.9	62.6	6.3	67.1
Mar 00	673.6	927.0	64.9	6.5	66.9
Apr 00	673.1	926.7	69.2	7.0	67.1
May 00	662.4	921.4	61.6	6.3	66.2
Jun 00	559.5	925.8	58.5	5.9	66.2
Jul 00	669.9	924.6	60.2	6.1	66.2

Source: ABS Catalogue No. 6202.0.

### ANALYSIS OF TABLE 3.1

The seasonally adjusted unemployment rate decreased to 6.1% in July 2000.

The seasonally adjusted number of unemployed persons increased by 1,700 to 60,200, while the number of employed persons decreased by 1,200 to 924,600.

Western Australia's seasonally adjusted participation rate for July 2000 remained at 66.2% and continues to be the highest of all the States.

## 3.2 LABOUR FORCE STATUS (AGED 15 YEARS AND OVER): Trend (a)

	Employed full-time	Total employed	Total unemployed	Unemployment rate	Participation rate
	'000	'000	'000	%	%
<b>Males</b>					
May 99	444.5	510.7	37.9	6.9	75.3
Jun 99	444.9	511.3	37.8	6.9	75.2
Jul 99	446.2	512.6	38.1	6.9	75.3
Aug 99	448.2	514.5	38.7	7.0	75.5
Sep 99	450.6	516.8	39.4	7.1	75.8
Oct 99	453.0	519.3	39.9	7.1	76.1
Nov 99	455.5	521.5	40.3	7.2	76.3
Dec 99	457.1	523.3	40.3	7.1	76.4
Jan 00	458.5	524.6	39.8	7.0	76.4
Feb 00	459.0	525.3	38.8	6.9	76.3
Mar 00	458.9	525.6	37.7	6.7	76.1
Apr 00	458.5	525.7	36.6	6.5	75.8
May 00	458.0	525.8	35.4	6.3	75.6
Jun 00	457.4	525.9	34.5	6.2	75.4
Jul 00	457.0	526.0	33.5	6.0	75.3
<b>Females</b>					
May 99	201.6	387.0	27.3	6.6	56.8
Jun 99	202.9	388.6	26.7	6.4	56.8
Jul 99	204.9	390.5	26.2	6.3	56.9
Aug 99	207.1	392.7	25.9	6.2	57.1
Sep 99	209.2	395.3	25.8	6.1	57.4
Oct 99	211.0	398.0	25.6	6.0	57.6
Nov 99	212.5	400.4	25.2	5.9	57.8
Dec 99	213.5	402.0	25.0	5.9	57.9
Jan 00	213.5	402.6	25.3	5.9	57.9
Feb 00	212.7	402.1	26.1	6.1	57.9
Mar 00	211.5	401.1	26.9	6.3	57.8
Apr 00	210.3	400.1	27.4	6.4	57.6
May 00	209.4	399.4	27.5	6.4	57.5
Jun 00	208.6	398.8	27.2	6.4	57.3
Jul 00	208.0	398.2	26.7	6.3	57.1
<b>Persons</b>					
May 99	646.1	897.6	65.2	6.8	66.0
Jun 99	647.8	899.8	64.4	6.7	66.0
Jul 99	651.0	903.1	64.3	6.6	66.1
Aug 99	655.2	907.2	64.6	6.6	66.3
Sep 99	659.8	912.1	65.2	6.7	66.6
Oct 99	664.1	917.2	65.5	6.7	66.8
Nov 99	667.8	921.9	65.5	6.6	67.0
Dec 99	670.6	925.3	65.3	6.6	67.1
Jan 00	672.0	927.1	65.1	6.6	67.1
Feb 00	671.7	927.4	64.9	6.5	67.1
Mar 00	670.4	926.7	64.6	6.5	66.9
Apr 00	668.8	925.9	63.9	6.5	66.7
May 00	667.3	925.2	62.9	6.4	66.5
Jun 00	666.0	924.7	61.7	6.3	66.4
Jul 00	665.0	924.3	60.3	6.1	66.2

(a) Trend estimates for the previous months have been revised.

Source: ABS Catalogue No. 6202.0.

### ANALYSIS OF TABLE 3.2

The trend estimate of the unemployment rate declined to 6.1% in July 2000, while the trend estimate of the participation rate decreased to 66.2%.

*For more information regarding these tables, please contact the National Inquiry Service on 1300 135 070.*

# 3.3

## AVERAGE WEEKLY EARNINGS OF EMPLOYEES: Trend

	FULL TIME ADULTS.....		ALL PERSONS
	Ordinary time earnings	Total earnings	Total earnings
	\$	\$	\$
<b>Males</b>			
19 Feb 99	807.40	866.10	727.40
21 May 99	814.50	871.40	727.70
20 Aug 99	827.60	883.20	735.50
19 Nov 99	842.60	896.40	746.40
18 Feb 00	857.70	908.70	757.30
19 May 00	876.00	922.50	767.40
<b>Females</b>			
19 Feb 99	637.80	650.00	417.80
21 May 99	640.30	652.70	420.70
20 Aug 99	644.40	656.60	422.20
19 Nov 99	653.90	665.40	425.80
18 Feb 00	666.70	677.00	433.30
19 May 00	680.40	688.90	442.10
<b>Persons</b>			
19 Feb 99	747.40	789.60	571.20
21 May 99	752.60	793.70	573.60
20 Aug 99	762.50	802.60	576.90
19 Nov 99	774.90	813.60	582.30
18 Feb 00	788.50	824.80	590.70
19 May 00	804.10	837.00	600.40

Source: ABS Catalogue No. 6302.0.

*For more information regarding Average Weekly Earnings, please contact the National Inquiry Service on 1300 135 070.*



## 3.4 INDUSTRIAL DISPUTES CAUSING STOPPAGE OF WORK

### WORKERS INVOLVED.....

	Number of Disputes	Directly	Indirectly	Total	Working days lost
	Number	'000	'000	'000	'000
<b>Calendar Year</b>					
1997	71	30.9	0.9	31.7	60.1
1998	78	28.6	0.1	28.8	61.2
1999	124	32.1	0.0	32.1	43.4
<b>Months</b>					
Jan 99	n.p.	0.6	0.0	0.6	1.2
Feb 99	12	1.1	0.0	1.1	1.8
Mar 99	14	1.9	0.0	1.9	3.4
Apr 99	6	0.7	0.0	0.7	2.6
May 99	16	3.4	0.1	3.5	2.9
Jun 99	11	2.6	0.0	2.6	4.7
Jul 99	18	2.9	0.0	2.9	3.2
Aug 99	13	11.1	0.0	11.1	8.5
Sep 99	10	2.0	0.0	2.0	3.2
Oct 99	17	3.8	0.0	3.8	8.7
Nov 99	8	1.1	0.0	1.1	1.6
Dec 99	10	1.8	0.0	1.8	1.8
Jan 00	16	4.0	0.0	4.0	7.5
Feb 00	19	2.6	0.0	2.6	2.9
Mar 00	13	3.9	0.0	3.9	14.4
Apr 00 r	8	1.2	0.0	1.2	7.2
May 00	13	1.7	0.0	1.7	4.2

Source: Industrial Disputes, Unpublished Data.

In ABS industrial disputes statistics, an industrial dispute is defined as a withdrawal from work by a group of employees (i.e. a strike), or a refusal by an employer or a number of employers to permit some or all of their employees to work (i.e. a lockout), each withdrawal or refusal being made in order to enforce a demand, to resist a demand, or to express a grievance. That is, the statistics cover employee strikes and employer lockouts, but do not cover other action due to labour disputes. (See *Industrial Disputes, Australia*, cat no. 6321.0 Explanatory Notes and Glossary for more details.)

For more information regarding Industrial Disputes, please contact the National Inquiry Service on 1300 135 070.

# 3.5

## WAGE AND SALARY EARNERS: INDUSTRY-SECTOR

	NUMBER OF EMPLOYEES.....						GROSS EARNINGS
	Nov 1998	Feb 1999	May 1999	Aug 1999	Nov 1999	Feb 2000	Mar qtr 2000
	'000	'000	'000	'000	'000	'000	\$m
<b>Industry</b>							
Mining	27.2	30.5	29.3	28.2	26.4	26.5	473.8
Manufacturing	70.9	71.8	74.6	73.1	67.8	67.4	661.3
Electricity, gas and water supply	6.3	6.4	6.3	6.0	5.7	5.7	76.0
Construction	45.7	43.8	36.0	34.0	37.9	45.2	478.3
Wholesale trade	35.8	30.6	36.1	44.6	47.7	47.9	421.2
Retail trade	102.6	107.1	110.5	117.6	123.0	104.8	495.8
Accommodation, cafes & restaurants	51.7	57.3	46.7	40.1	38.0	37.9	164.7
Transport and storage	29.5	28.0	24.9	24.8	27.1	27.6	300.9
Communication services	8.9	9.1	8.9	9.4	9.0	9.2	97.4
Finance & insurance	29.4	28.7	28.5	20.9	21.0	23.7	273.2
Property & business services	84.7	84.9	100.9	100.7	105.2	100.6	775.5
Government administration and defence	29.3	29.1	30.1	30.6	30.9	31.0	308.0
Education	64.0	63.5	71.1	70.4	71.4	65.7	577.5
Health & community services	75.6	82.6	80.8	79.7	75.2	77.1	592.8
Cultural & recreational services	15.8	18.6	18.6	14.7	14.6	17.9	106.5
Personal & other services	28.2	26.2	28.2	28.5	31.7	32.2	261.1
<b>All industries (a)</b>	<b>707.2</b>	<b>720.1</b>	<b>733.0</b>	<b>724.9</b>	<b>734.5</b>	<b>722.4</b>	<b>6 083.4</b>
<b>Sector</b>							
Private	561.8	574.6	582.7	574.1	583.4	575.3	4 598.8
Public	145.4	145.5	150.3	150.8	151.1	147.1	1 484.6
	Nov 1999.....			Feb 2000.....			
	Full-time	Part-time	Persons	Full-time	Part-time	Persons	
	'000	'000	'000	'000	'000	'000	
<b>Industry</b>							
Mining	25.6	0.9	26.4	24.8	* 1.7	26.5	
Manufacturing	62.3	5.5	67.8	61.7	5.7	67.4	
Electricity, gas and water supply	5.5	0.2	5.7	5.5	0.2	5.7	
Construction	35.7	* 2.2	37.9	42.9	* 2.4	45.2	
Wholesale trade	37.6	10.2	47.7	38.0	* 9.9	47.9	
Retail trade	64.1	58.9	123.0	49.4	55.3	104.8	
Accommodation, cafes & restaurants	11.1	26.9	38.0	11.3	26.6	37.9	
Transport and storage	21.5	5.5	27.1	22.9	* 4.7	27.6	
Communication services	7.1	2.0	9.0	7.0	2.2	9.2	
Finance & insurance	15.8	5.2	21.0	18.2	5.5	23.7	
Property & business services	78.4	* 26.8	105.2	71.4	* 29.2	100.6	
Government administration and defence	24.3	6.6	30.9	24.6	6.4	31.0	
Education	39.9	31.5	71.4	39.8	25.8	65.7	
Health & community services	36.0	39.2	75.2	36.5	40.7	77.1	
Cultural & recreational services	7.9	6.8	14.6	7.7	* 10.2	17.9	
Personal & other services	21.1	10.6	31.7	21.7	10.5	32.2	
<b>All industries (a)</b>	<b>495.6</b>	<b>238.9</b>	<b>734.5</b>	<b>485.2</b>	<b>237.2</b>	<b>722.4</b>	
<b>Sector</b>							
Private	392.7	190.7	583.4	381.6	193.7	575.3	
Public	102.9	48.2	151.1	103.6	43.4	147.1	

(a) Includes employees of government agencies classified to Agriculture, forestry and fishing.

Source: ABS Catalogue No. 6248.0.

# 4.1

## MONTHLY RETAIL TURNOVER

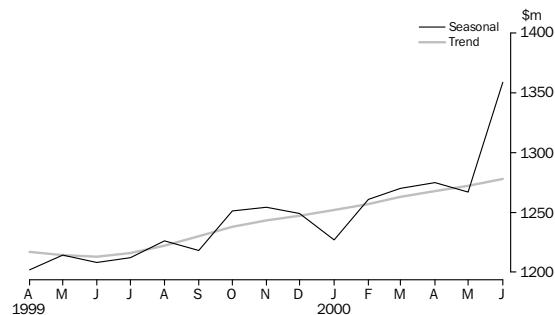
	Food	Department stores	Clothing and soft goods	Household goods	Recreational goods
	\$m	\$m	\$m	\$m	\$m
<b>Months</b>					
Apr 99	534.9	90.5	55.8	166.9	51.6
May 99	519.7	110.4	64.0	186.3	53.6
Jun 99	502.7	91.3	57.3	185.6	52.6
Jul 99	537.9	102.0	59.5	190.3	49.5
Aug 99	519.5	88.2	52.3	191.9	48.6
Sep 99	529.3	99.1	55.4	186.2	45.4
Oct 99	572.8	108.6	61.8	198.9	57.0
Nov 99	560.0	120.9	68.1	205.3	62.6
Dec 99	673.4	204.7	88.9	244.0	79.5
Jan 00	538.8	91.2	56.6	188.6	63.1
Feb 00	524.7	81.5	53.2	185.1	61.4
Mar 00	561.6	90.6	58.0	191.2	63.9
Apr 00	541.2	103.8	66.6	173.3	66.5
May 00	533.5	105.5	76.1	185.2	69.5
Jun 00	527.8	110.0	87.5	214.8	69.3

	Hospitality and services	Other	Total	Seasonally adjusted	Trend estimates
	\$m	\$m	\$m	\$m	\$m
<b>Months</b>					
Apr 99	149.9	108.2	1157.8	1 201.4	1 218.1
May 99	145.2	107.7	1187.0	1 216.8	1 215.7
Jun 99	136.3	104.9	1130.6	1 210.4	1 214.2
Jul 99	151.7	107.3	1198.2	1 211.7	1 216.3
Aug 99	148.3	111.2	1160.1	1 225.1	1 222.2
Sep 99	147.4	114.5	1177.3	1 218.2	1 229.8
Oct 99	163.4	120.8	1283.3	1 248.8	1 236.6
Nov 99	150.8	126.7	1294.4	1 253.9	1 242.0
Dec 99	168.4	170.7	1629.6	1 248.3	1 246.8
Jan 00	140.8	126.4	1205.6	1 226.6	1 251.2
Feb 00	148.7	125.0	1179.6	1 259.9	1 256.0
Mar 00	148.6	131.7	1245.5	1 270.2	1 261.5
Apr 00	134.3	124.4	1210.0	1 273.7	1 267.4
May 00	133.4	137.9	1 241.0	1 266.6	1 272.8
Jun 00	136.5	133.9	1 279.8	1 358.6	(a) 1 278.4

(a) Adjustment for one-off impact in June 2000 applied in calculating trend

Source: ABS Catalogue No. 8501.0

### MONTHLY RETAIL TURNOVER



Source: ABS Catalogue No. 8501.0.

# 5.1

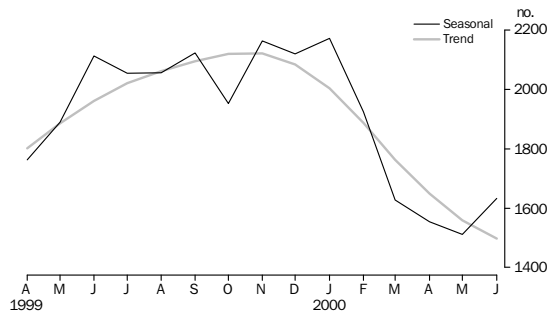
## DWELLING UNITS APPROVED

	NEW HOUSES.....		NEW OTHER RESIDENTIAL BUILDINGS.....		TOTAL (a).....	
	Dwelling Units	Value	Dwelling Units	Value	Dwelling Units	Value
	No.	\$m	No.	\$m	No.	\$m
<b>Financial years</b>						
1997-98	15 828	1 634.2	2 526	222.0	18 460	2 943.8
1998-99	17 490	1 912.9	2 949	298.3	20 614	3 544.3
1999-00	18 653	2 173.7	4 004	497.2	22 852	4 076.8
<b>Months</b>						
Apr 99	1 435	156.5	189	20.4	1 636	267.1
May 99	1 663	181.5	306	26.7	1 974	292.1
Jun 99	1 806	211.1	612	46.2	2 431	348.3
Jul 99	1 705	187.3	345	42.9	2 062	361.0
Aug 99	1 773	194.8	292	26.9	2 097	360.3
Sep 99	1 629	185.7	451	43.1	2 085	382.2
Oct 99	1 666	193.6	170	17.4	1 842	367.4
Nov 99	2 055	243.0	365	34.4	2 435	399.5
Dec 99	1 734	201.3	239	23.5	2 014	305.2
Jan 00	1 403	169.6	249	25.6	1 675	269.2
Feb 00	1 498	167.9	452	101.2	1 972	353.1
Mar 00	1 507	189.0	249	24.3	1 768	306.7
Apr 00	1 093	128.8	278	42.0	1 375	273.8
May 00	1 392	172.2	397	68.3	1 810	412.9
Jun 00	1 198	140.5	517	47.6	1 717	285.5

(a) Includes alterations, additions, conversions and non-residential buildings.

Source: ABS Catalogue No. 8731.5.

### TOTAL DWELLING UNITS APPROVED



Source: ABS Catalogue No. 8731.5.

*For more information regarding Building Approvals, please contact Pamela Prince on (08) 9360 5207.*

# 5.2

## VALUE OF NON-RESIDENTIAL BUILDING APPROVED

	<i>Private</i>	<i>Public</i>	<i>Total</i>
	\$m	\$m	\$m
<b>Financial Years</b>			
1997-98	706.7	193.3	899.8
1998-99	897.5	210.7	1 108.3
1999-00	666.0	495.6	1 161.7
<b>Months</b>			
Apr 99	62.4	9.2	71.5
May 99	48.8	16.9	65.7
Jun 99	57.0	17.2	74.2
Jul 99	59.2	45.4	104.6
Aug 99	61.7	51.7	113.4
Sep 99	60.2	74.6	134.8
Oct 99	71.5	65.4	137.0
Nov 99	48.8	46.9	95.7
Dec 99	44.8	17.5	62.3
Jan 00	38.6	18.7	57.3
Feb 00	54.3	9.5	63.8
Mar 00	38.9	35.2	74.0
Apr 00	63.0	24.5	87.5
May 00	68.3	79.4	147.7
Jun 00	56.7	26.8	83.6

Source: ABS Catalogue No. 8731.5.

*For more information regarding Building Approvals, please contact Pamela Prince on (08) 9360 5207.*

# 5.3

## SELECTED HOUSING PRICE INDEXES: PERTH

	<i>Materials used in house</i>	<i>Established homes</i>	<i>Project homes</i>
<b>Financial Years</b>			
1996-97	115.3	109.2	101.3
1997-98	115.9	113.3	102.2
1998-99	116.1	118.9	106.1
<b>Quarters</b>			
Mar 99	116.0	120.8	106.2
Jun 99	115.9	121.4	107.5
Sep 99	116.9	121.6	111.5
Dec 99	117.1	125.3	116.2
Mar 00	118.1	126.7	115.7
Jun 00	118.7	n.y.a.	n.y.a.

Base of each index: 1989-90 = 100.0.

Source: ABS Catalogue Nos. 6408.0 and 6416.0.

*For more information regarding Price Indexes, please contact Peter Hodgson on (08) 9360 5922.*

# 5.4

## PRICE INDEX OF MATERIALS USED IN BUILDING OTHER THAN HOUSE BUILDING: PERTH

### SPECIAL SERIES.....

	<i>All groups</i>	<i>All Electrical materials</i>	<i>All Mechanical services</i>	<i>All Plumbing materials</i>
<b>Financial Years</b>				
1996-97	114.6	110.6	113.3	119.2
1997-98	114.6	109.3	113.4	124.6
1998-99	114.1	107.8	116.1	124.3
<b>Quarters</b>				
Mar 99	113.9	107.9	116.3	124.8
Jun 99	114.1	107.8	116.5	124.5
Sep 99	114.4	107.5	117.4	127.6
Dec 99	115.0	108.0	117.8	129.8
Mar 00	115.8	108.6	117.7	131.4
Jun 00	116.5	109.4	117.6	131.4

### SELECTED MAJOR BUILDING MATERIALS.....

	<i>Structural timber</i>	<i>Clay bricks</i>	<i>Ready mixed concrete</i>	<i>Structural steel</i>	<i>Aluminium windows</i>
<b>Financial Years</b>					
1996-97	106.6	124.1	120.1	113.9	117.0
1997-98	106.8	127.8	117.4	116.5	117.9
1998-99	105.0	131.4	114.5	117.5	115.0
<b>Quarters</b>					
Mar 99	105.0	131.4	113.3	117.4	113.8
Jun 99	103.9	131.2	113.9	117.4	115.2
Sep 99	100.8	134.8	113.8	117.1	115.2
Dec 99	101.6	133.3	114.5	118.5	116.4
Mar 00	104.6	131.7	114.0	120.5	116.4
Jun 00	106.3	131.7	114.0	120.5	118.5

Base of each index 1989-90 = 100.0.

Source: ABS Catalogue No. 6407.0.

*For more information regarding these tables, please contact Peter Hodgson on (08) 9360 5922.*

# 6.1

## LIVESTOCK SLAUGHTERED ('000)

	CATTLE.....			OTHER.....			
	<i>Bulls, bullocks, steers</i>	<i>Cows, heifers</i>	<i>Total (excluding calves)</i>	<i>Calves</i>	<i>Sheep</i>	<i>Lambs</i>	<i>Pigs</i>
<b>Financial Years</b>							
1997-98	196.0	252.1	448.1	5.6	2 717.4	1 856.5	550.0
1998-99	197.9	240.8	438.7	6.4	1 938.0	2 076.4	568.7
1999-00	181.5	212.4	393.8	10.6	1 870.6	2 283.1	513.8
<b>Quarters</b>							
Mar 99	45.9	61.0	106.9	1.6	580.7	478.7	150.3
Jun 99	40.3	53.6	93.9	1.8	462.0	505.5	138.8
Sep 99	42.2	54.0	96.1	2.3	407.0	553.4	143.6
Dec 99	55.8	56.2	112.0	3.0	504.9	633.6	128.0
Mar 00	42.3	52.8	95.1	2.9	564.5	528.6	105.8
Jun 00	41.2	49.4	90.6	2.4	394.2	567.5	136.4

Note: From June 1998, the collection frequency of this information changed from monthly to quarterly.

Source: ABS Catalogue No. 7215.0.

# 6.2

## MEAT PRODUCED (a)(Tonnes Carcass Weight)

	<i>Beef</i>	<i>Veal</i>	<i>Mutton</i>	<i>Lamb</i>	<i>Pig meat</i>
<b>Financial Years</b>					
1997-98	102 482	312	56 442	33 581	35 499
1998-99	104 979	436	39 766	39 021	37 534
1999-00	94 973	859	38 127	42 960	34 201
<b>Quarters</b>					
Mar 99	25 840	108	11 938	9 100	9 752
Jun 99	21 592	133	9 285	9 465	9 649
Sep 99	22 568	180	8 209	10 388	9 457
Dec 99	27 780	249	10 485	11 839	8 366
Mar 00	23 147	239	11 458	9 881	7 056
Jun 00	21 478	191	7 975	10 852	9 322

(a) Red meat is shown in carcass weight and excludes offal.

Note: From June 1998, the collection frequency of this information changed from monthly to quarterly.

Source: ABS Catalogue No. 7215.0.

*For more information regarding these tables, please contact Pamela Prince on (08) 9360 5207.*

# 6.3

## WOOL RECEIVALS AND LIVE SHEEP EXPORTS

	RECEIVALS OF TAXABLE WOOL BY BROKERS AND DEALERS(a) .....		EXPORT OF LIVE SHEEP (b).....		
	Bales '000	Tonnes	Quantity '000	Gross Value \$'000	Gross Weight '000t
<b>Financial Years</b>					
1997-98	699 492	153 885	r 3 266.0	130 798	167.0
1998-99	688 021	142 225	4 033.1	148 855	206.6
1999-00	735 261	151 620	3 770.3	146 607	185.9
<b>Quarters</b>					
Mar 99	198 316	40 321	1 120.9	40 845	58.0
Jun 99	107 068	23 838	870.8	31 015	42.5
Sep 99	183 613	37 784	796.9	32 048	40.2
Dec 99	221 683	45 341	1 136.4	r 42 691	56.3
Mar 00	r 187 251	r 37 696	r 955.7	r 37 240	r 46.8
Jun 00	142 714	30 799	881.2	34 629	42.6

(a) Source: National Council of Wool Selling Brokers.

(b) Source: ABS FASTTRACCS Service.

Note: From June 1998, the collection frequency of this information changed from monthly to quarterly.

*For more information regarding these tables, please contact Pamela Prince on (08) 9360 5207.*



# 6.4

## ENERGY PRODUCTION

	Coal(a)	Electricity generated	Gas for distribution(b)	Crude oil(c)(d)	Natural gas(d)
	'000 tonnes	million kWh	million MJ	mega-litres	million m <sup>3</sup>
<b>Financial Years</b>					
1996-97	5 557	16 738	204 257	15 974	16 713
1997-98	5 709	17 203	230 201	17 561	17 707
1998-99	5 797	16 718	228 774	15 493	18 336
<b>Quarters</b>					
Dec 98	1 596	4 127	59 181	3 149	3 068
Mar 99	1 580	4 325	55 033	3 114	4 443
Jun 99	1 372	4 007	55 948	2 941	4 608
Sep 99	1 611	4 399	59 661	4 036 p	4 861 p
Dec 99	1 669	4 541	57 238	4 375 p	4 611 p
Mar 00	1 627	4 797	58 862	4 713 p	4 526 p

(a) Source: Department of Minerals and Energy.

(b) Available for issue through mains.

(c) Includes condensate.

(d) Source: Australian Bureau of Agriculture and Resource Economics.

*For more information regarding these tables, please contact Pamela Prince on (08) 9360 5207.*

# 6.5

## MINERAL EXPLORATION: EXPENDITURE BY TYPE OF MINERAL SOUGHT

	METALLIC MINERALS.....			NON-METALLIC MINERALS.....		Total minerals \$m
	Base metals(a)	Gold	Other	Diamonds	Other	
	\$m	\$m	\$m	\$m	\$m	
<b>Financial Years</b>						
1996-97	88.1	531.7	n.a.	38.6	n.a.	691.7
1997-98	117.1	459.3	3.8	31.4	2.1	660.4
1998-99	90.9	330.7	3.4	32.9	0.9	523.1
<b>Quarters</b>						
Dec 98	24.2	102.0	0.9	12.4	0.3	157.3
Mar 99	20.9	67.2	1.1	2.7	0.2	102.3
Jun 99	15.5	75.4	0.6	7.4	0.1	109.4
Sep 99	16.1	67.9	1.9	10.6	0.2	107.9
Dec 99	26.5	61.3	n.p.	7.4	n.p.	108.8
Mar 00	24.8	47.2	2.1	2.8	0.7	85.0

(a) Includes copper, lead, zinc, silver, nickel and cobalt.

Source: ABS Catalogue No. 8412.0.

For more information regarding these tables, please contact Pamela Prince on (08) 9360 5207.

# 6.6

## MINERAL PRODUCTION

	Iron ore '000 tonnes	Bauxite '000 tonnes	Gold tonnes	Ilmenite '000 tonnes	Nickel '000 tonnes	Diamonds '000 carats
<b>Financial Years</b>						
1996-97	150 711	27 466	227.0	1 910	115	42 566
1997-98	156 973	28 544	240.5	2 220	134	43 046
1998-99 p	r 146 221	29 237	218.2	2 056	130	35 910
<b>Quarters</b>						
Dec 98 p	38 567	7 416	58.9	531	37	9 056
Mar 99 p	35 372	7 723	51.9	489	20	7 109
Jun 99 p	34 445	7 116	52.6	443	34	7 264
Sep 99 p	r 38 613	8 085	54.6	461	35	7 906
Dec 99 p	r 36 076	r 7 620	r 52.5	505	r 36	r 7 420
Mar 00 p	36 129	7 750	47.8	477	36	6 671

Source: Australian Bureau of Agricultural and Resource Economics.

For more information regarding these tables, please contact Pamela Prince on (08) 9360 5207.

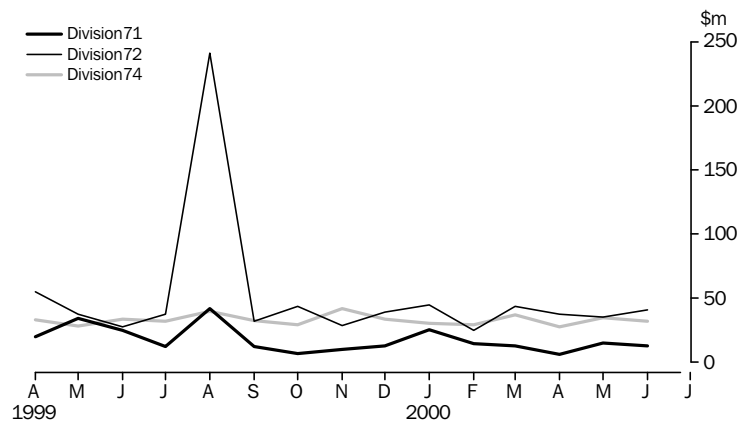
# 7.1

## IMPORTS BY SELECTED DIVISIONS

	33	71	72	74	78
	<i>Petroleum, petroleum products, etc</i>	<i>Power generating machinery and equipment</i>	<i>Machinery specialised for particular industries</i>	<i>General industrial machinery and equipment</i>	<i>Road vehicles</i>
	\$m	\$m	\$m	\$m	\$m
<b>Financial Years</b>					
1997-98	799.0	208.0	618.8	596.7	1 051.9
1998-99	794.2	225.5	583.8	540.4	1 005.1
1999-00	1 281.9	183.7	661.6	399.9	1 052.4
<b>Months</b>					
Apr 99	91.5	19.9	54.9	33.1	99.1
May 99	84.4	34.3	38.0	28.2	79.0
Jun 99	65.9	24.7	27.9	33.6	83.6
Jul 99	89.8	12.2	37.3	32.0	102.4
Aug 99	97.7	41.9	241.2	39.7	96.6
Sep 99	86.9	12.4	31.8	32.6	76.5
Oct 99	105.3	7.0	43.4	29.3	91.5
Nov 99	108.4	10.3	28.8	41.7	84.6
Dec 99	116.8	13.0	39.1	33.6	75.5
Jan 00	98.8	25.3	44.9	30.3	70.4
Feb 00	95.6	14.5	24.7	29.2	67.4
Mar 00	94.3	12.8	43.3	36.8	73.7
Apr 00	98.5	6.4	37.8	27.8	86.5
May 00	207.0	15.0	35.6	35.0	99.4
Jun 00	85.3	12.8	53.6	32.1	128.2

Source: ABS FASTTRACCS Service.

### IMPORTS BY SELECTED DIVISION



Source: ABS FASTTRACCS Service.

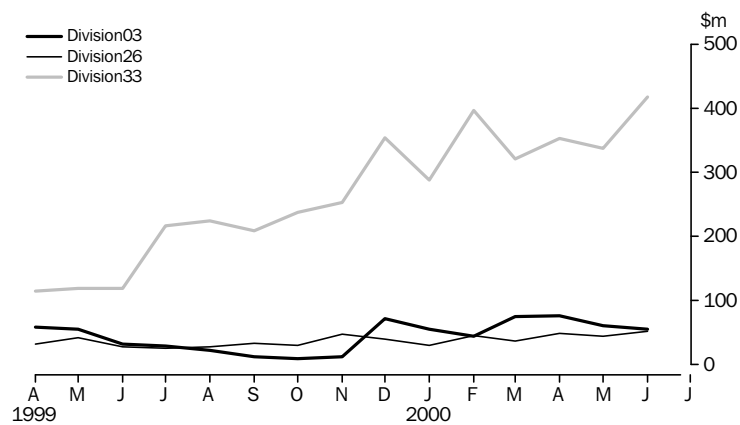
# 7.2

## EXPORTS BY SELECTED DIVISIONS

	03	04	26	28	33
	<i>Fish, crustaceans, molluscs, etc</i>	<i>Cereals and cereal preparations</i>	<i>Textile fibres and waste (excluding yarn or fabric)</i>	<i>Metalliferous ores and metal scrap</i>	<i>Petroleum, petroleum products etc.</i>
	\$m	\$m	\$m	\$m	\$m
<b>Financial Years</b>					
1997-98	337.2	1 860.5	655.3	4 219.1	2 046.8
1998-99	406.0	1 770.4	410.3	4 300.8	1 670.3
1999-00	525.5	1 636.3	468.9	4 425.4	3 746.7
<b>Months</b>					
Mar 99	51.8	167.9	30.5	354.4	106.3
Apr 99	58.3	119.4	32.4	300.0	114.4
May 99	54.9	97.0	41.6	295.3	118.8
Jun 99	32.6	162.9	27.5	358.2	119.3
Jul 99	29.3	129.7	26.1	353.3	217.1
Aug 99	22.1	95.8	28.1	334.3	225.0
Sep 99	12.9	87.4	33.6	370.1	208.8
Oct 99	9.5	95.5	30.4	355.0	237.3
Nov 99	12.2	104.5	47.7	368.2	252.6
Dec 99	71.8	167.7	40.1	339.9	354.1
Jan 00	55.6	146.6	30.0	274.6	287.9
Feb 00	44.4	201.8	45.9	369.6	397.2
Mar 00	74.6	161.5	36.7	336.5	321.7
Apr 00	76.1	159.4	48.4	425.8	353.5
May 00	61.0	166.4	44.8	392.8	337.4
Jun 00	55.1	115.4	52.6	501.8	417.9

Source: ABS FASTTRACCS Service.

### EXPORTS BY SELECTED DIVISION



Source: ABS FASTTRACCS Service.

For further information regarding these tables, please contact the National Inquiry Service on 1300 135 070.

# 8.1

## NEW MOTOR VEHICLE REGISTRATIONS (a)

	WESTERN AUSTRALIA.....					PERTH STATISTICAL DIVISION.....
	Passenger vehicles	Light commercial vehicles	Trucks and buses	Total(b)	Motorcycles and scooters	Total(b)
<b>Financial Years</b>						
1997-98	67 675	11 486	2 295	81 456	3 103	63 131
1998-99	66 573	10 823	2 375	79 771	3 161	62 268
1999-00	57 838	11 035	2 059	70 932	3 210	52 479
<b>Months</b>						
Apr 99	6 115	1 072	208	7 395	223	4 666
May 99	5 182	730	157	6 069	223	4 871
Jun 99	5 130	878	197	6 203	208	6 484
Jul 99	7 015	1 281	281	8 577	269	4 135
Aug 99	4 206	685	119	5 010	268	4 594
Sep 99	4 779	843	185	5 807	275	4 517
Oct 99	4 692	756	181	5 629	316	4 434
Nov 99	4 657	801	177	5 635	363	4 808
Dec 99	5 064	880	190	6 134	329	5 024
Jan 00	5 296	925	164	6 385	237	3 770
Feb 00	4 110	610	122	4 842	236	4 533
Mar 00	4 738	915	131	5 784	311	4 863
Apr 00	5 036	1 003	150	6 189	238	3 626
May 00	4 576	1 115	152	5 843	234	4 488
Jun 00	3 669	1 221	207	5 097	134	3 687

(a) Excludes plant and equipment, caravans and trailers. (b) Excludes motor cycles.

Source: New Motor Vehicle Registrations, Western Australia (Product no. 9303.0.40.003).

# 8.2

## VEHICLE REGISTRATION STATISTICS (a)

	PASSENGER VEHICLES.....		OTHER VEHICLES.....		TOTAL.....	
	Original	Trend	Original	Trend	Original	Trend
<b>Months</b>						
Apr 99	5 185	5 486	884	1 055	6 069	6 541
May 99	5 128	5 376	1 075	1 035	6 203	6 411
Jun 99	7 015	5 201	1 562	1 023	8 577	6 224
Jul 99	4 206	4 996	804	1 029	5 010	6 025
Aug 99	4 779	4 835	1 028	1 044	5 807	5 879
Sep 99	4 692	4 766	937	1 054	5 629	5 820
Oct 99	4 657	4 781	978	1 056	5 635	5 837
Nov 99	5 064	4 836	1 070	1 041	6 134	5 877
Dec 99	5 296	4 902	1 089	1 017	6 385	5 919
Jan 00	4 110	4 898	732	992	4 842	5 890
Feb 00	4 738	4 785	1 046	979	5 784	5 764
Mar 00	5 036	4 595	1 153	980	6 189	5 575
Apr 00	3 874	4 346	753	991	4 627	5 337
May 00	4 576	4 072	1 267	1 006	5 843	5 078
Jun 00	3 669	3 792	1 428	1 027	5 097	4 819

(a) Excludes motor cycles, plant and equipment, caravans and trailers..

Source: New Motor Vehicle Registrations (Unpublished Data).

For more information regarding these tables, please contact Pam Prince on  
(08) 9360 5207.

# 9.1

## PRIVATE NEW CAPITAL EXPENDITURE BY SELECTED INDUSTRY GROUPS

	SELECTED INDUSTRY.....			TOTAL.....	
	Mining \$m	Manufacturing \$m	Other selected industries \$m	Original \$m	Seasonally adjusted \$m
<b>Financial Years</b>					
1996-97	4 158	625	1 834	6 617	6 627
1997-98	5 759	1 049	1 953	8 760	8 742
1998-99	3 645	1 284	2 037	6 965	7 015
<b>Quarters</b>					
Dec 98	824	304	509	1 637	1 549
Mar 99	893	332	413	1 638	1 703
Jun 99	738	240	498	1 476	1 425
Sep 99	740	r 270	470	1 480	1 555
Dec 99	r 513	r 290	r 537	r 1342	r 1279
Mar 00	391	293	397	1 081	1 122

Source: ABS Catalogue No. 5646.0.

*For more information regarding these tables, please contact  
John Blanchette on Sydney (02) 9268 4357.*

## WESTERN AUSTRALIA.....

Indicator	Period	Unit	Current Australian figure	Current figure	Change from last period (%)	Figure one year ago	Change from one year ago (%)
<b>Population</b>							
Estimated resident population	Dec qtr 99 p	'000	19 080.8	1 873.8	0.3	1 845.5	1.5
Natural increase	Dec qtr 99 p	No.	31 774	3 197	-4.7	3 375	-5.3
<b>Tourism</b>							
<i>Hotels, motels etc and serviced apartments</i>							
Guest arrivals	Mar qtr 00	'000	7 931	666	-4.0	596	11.7
Guest rooms available	Mar qtr 00	No.	191 123	18 846	1.3	17 517	7.6
Room occupancy rates	Mar qtr 00	%	58	54	6.9	56	-3.6
<i>Overseas visitors</i>							
Short-term arrivals	May 00	No.	319 300	27 360	-22.5	27 520	-0.6
Long-term arrivals	May 00	No.	7 550	600	-33.3	640	-6.2
<i>Resident Departures</i>							
Short-term departures	May 00	No.	284 900	34 540	-1.0	31 920	8.2
Long-term departures	May 00	No.	7 200	810	0.0	750	8.0
<b>Employment</b>							
<i>Employed persons</i>							
Trend	July 00	'000	9 081.1	924.3	0.0	903.1	3.5
<i>Unemployed persons</i>							
Trend	July 00	'000	631.9	60.3	-2.3	64.3	6.4
<i>Participation rate</i>							
Trend	July 00	%	63.8	66.2	-0.2	66.1	0.1
<i>Unemployment rate</i>							
Trend	July 00	%	6.5	6.1	-0.2	6.6	-0.5
<i>Full-time adult average weekly earnings</i>							
<i>Trend</i>							
Males	May 00	\$	886.90	922.50	1.5	871.40	5.9
Females	May 00	\$	713.2	688.90	1.8	652.70	5.5
Persons	May 00	\$	821.7	837.00	1.5	793.70	5.5
<b>Retail</b>							
<i>Monthly retail turnover</i>							
Original	Jun 00	\$m	12 547.9	1 279.8	3.1	1 130.6	13.2
Trend	Jun 00	\$m	12 257.6	1 278.4	0.4	1 214.2	5.3
<b>Construction</b>							
<i>Building Approvals</i>							
Dwelling Units	Jun 00	No.	10 872	1 717	-5.1	2 431	-29.4
Value of all building	Jun 00	\$m	2 569.9	285.5	-30.9	348.3	-18.0
<i>House Price Indexes</i>							
Materials used in house building	Mar qtr 00	Index No.	123.8	118.1	0.9	116.0	1.8
Established houses	Mar qtr 00	Index No.	143.9	126.7	1.1	120.8	4.9
Project homes	Mar qtr 00	Index No.	122.4	115.7	-0.4	106.2	8.9
<b>Mineral Exploration</b>							
Gold	Mar qtr 00	\$m	71.9	47.2	-23.0	67.2	-29.8
Other minerals	Mar qtr 00	\$m	64.8	37.8	-20.4	35.1	7.7
<b>Overseas Trade</b>							
Imports	Jun 00	\$m	10 489.9	866.4	-10.3	672.2	28.9
Exports	Jun 00	\$m	9 193.0	2 588.9	4.7	1 646.3	57.3
<b>Transport</b>							
<i>Passenger vehicle registrations</i>							
Original	Jun 00	No.	45 521	3 669	-19.8	5 130	-28.5
Trend	Jun 00	No.	44 253	3 792	-6.9	5 201	-27.1
<i>Total registrations</i>							
Original	Jun 00	No.	60 879	5 097	-12.8	8 577	-40.6
Trend	Jun 00	No.	54 967	4 819	-5.1	6 224	-22.6
<b>Finance</b>							
<i>Private New Capital Expenditure</i>							
Original	Dec qtr 99	\$m	10 950	1 478	-0.1	1 637	-5.2
Seasonally adjusted	Dec qtr 99	\$m	10 214	1 409	-9.4	1 549	-11.1

## FOR MORE INFORMATION...

- INTERNET* **www.abs.gov.au** the ABS web site is the best place to start for access to summary data from our latest publications, information about the ABS, advice about upcoming releases, our catalogue, and Australia Now—a statistical profile.
- LIBRARY* A range of ABS publications is available from public and tertiary libraries Australia-wide. Contact your nearest library to determine whether it has the ABS statistics you require, or visit our web site for a list of libraries.
- CPI INFOLINE* For current and historical Consumer Price Index data, call 1902 981 074 (call cost 77c per minute).
- DIAL-A-STATISTIC* For the latest figures for National Accounts, Balance of Payments, Labour Force, Average Weekly Earnings, Estimated Resident Population and the Consumer Price Index call 1900 986 400 (call cost 77c per minute).

## INFORMATION SERVICE

Data which have been published and can be provided within five minutes are free of charge. Our information consultants can also help you to access the full range of ABS information—ABS user-pays services can be tailored to your needs, time frame and budget. Publications may be purchased. Specialists are on hand to help you with analytical or methodological advice.

- PHONE* **1300 135 070**
- EMAIL* **client.services@abs.gov.au**
- FAX* 1300 135 211
- POST* Client Services, ABS, GPO Box 796, Sydney 1041

## WHY NOT SUBSCRIBE?

ABS subscription services provide regular, convenient and prompt deliveries of ABS publications and products as they are released. Email delivery of monthly and quarterly publications is available.

- PHONE* 1300 366 323
- EMAIL* subscriptions@abs.gov.au
- FAX* 03 9615 7848
- POST* Subscription Services, ABS, GPO Box 2796Y, Melbourne 3001



2130550008008  
ISSN 0727-2367

RRP \$19.00